

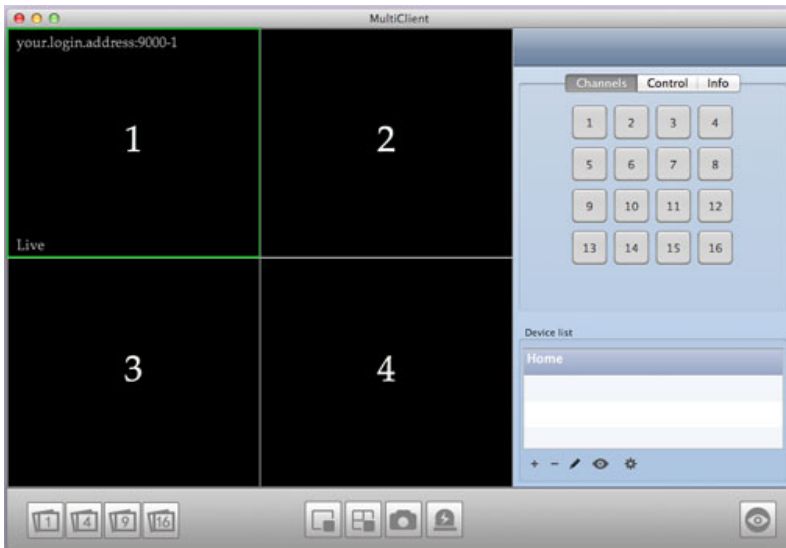
## MultiClient (Mac book) Operation Instruction

1. Down the Multi-Client Software for Mac at the following address

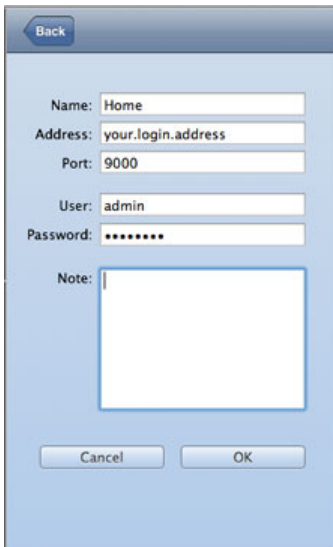
<http://www.iti.com.sg/Surveillance-Support-8500.html>



2. Go to download folder double Click on the MultiClient the following screen will appear.



3. Click on Add  the following screen appear

A dialog box for adding a new device. It has a 'Back' button at the top left. The fields are: Name: Home, Address: your.login.address, Port: 9000, User: admin, Password: \*\*\*\*\* (masked), and a Note text area. At the bottom are 'Cancel' and 'OK' buttons.

Back

Name: Home

Address: your.login.address

Port: 9000

User: admin

Password: \*\*\*\*\*

Note:

Cancel OK

4. Key in your login information and click on OK

Address: your.login.address

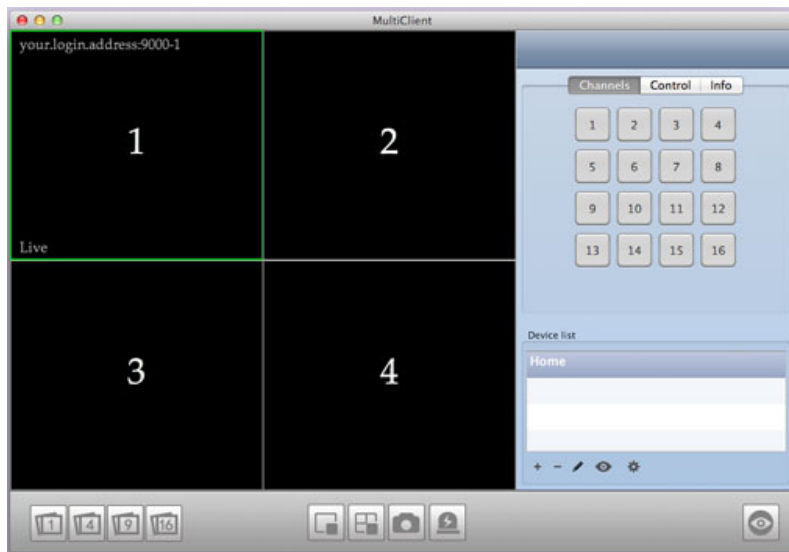
Port: 9000

User ID: your user ID

Password: your password

5. From following select Screen 1 and click on Channel 1, channel 1 will set on screen 1

You can repeat the step for screen 2, 3 & 4 ....

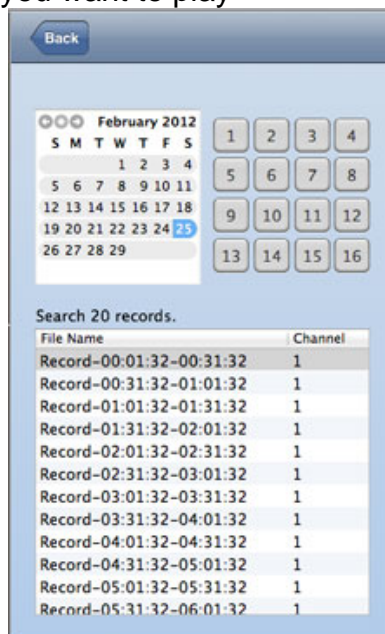


## Record Search Interface

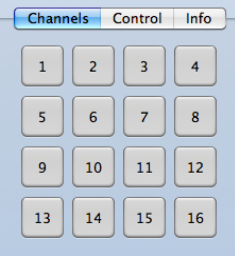
1. Select the Device from the Device list and click on Get record 



2. Select the Date and Channel, the record files list will show and click on the record file you want to play



## Function Description



Channels number, click and will display the chosen channel



Add device info



Delete device



Edit the info of device added



Get record info of the device



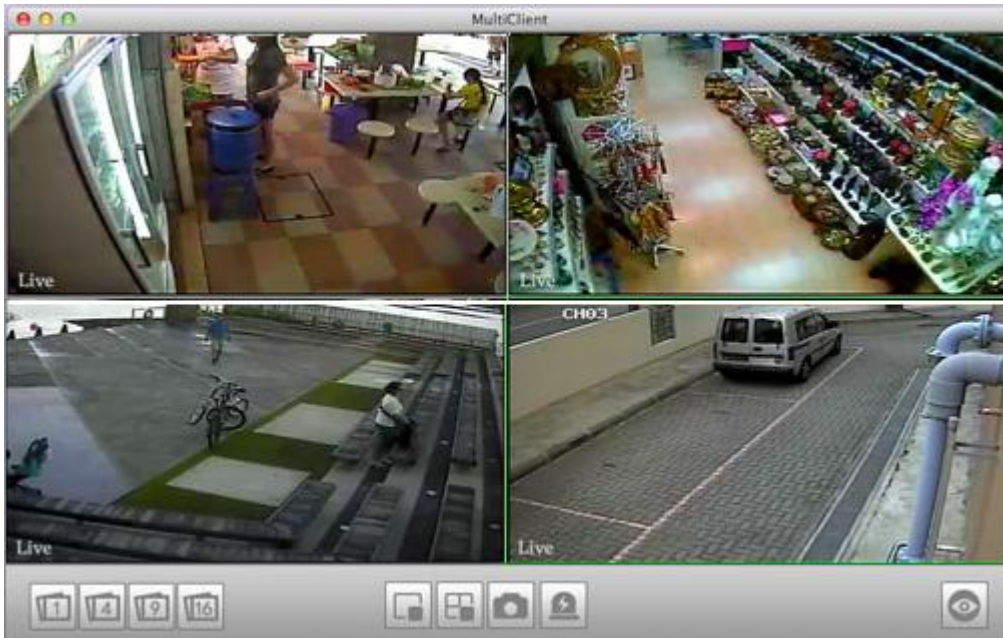
Control the remote devices











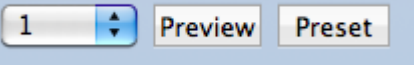



Show or hide toll bar



Full screen button



 <p>window of channels on main interface of Multi-Client Software</p>	 <p>Switch of 1/4/9/16CH image respectively</p>
	 <p>Close window of the chosen single channel</p>
	 <p>Close window of all channels</p>
	 <p>Snap for the chosen channel</p>
	 <p>Check the alarm info</p>

<p><b>Control</b> Control of the cradle head</p> 	 <p>Direction control buttons of cradle head</p>
	 <p>Preset of cradle head points</p>
	 <p>Image enlarge and minish buttons of cradle head</p>
	 <p>Focus enlarge and shorten buttons of cradle head</p>
	 <p>IRIS aperture enlarge and minish buttons of cradle head</p>

**Info**

Info of the device, like name, IP and port

Channels Control **Info**

Name: 192.168.5.84

Address: 192.168.5.84:8082

Note:

Get Alarm

**Get Alarm**

Number	Address	Channel	Type	Status	Time
1	192.168.5.85:8085	2	Sensor al...	Start	Tuesday, August 9, 2011 9:18:31 AM
2	192.168.5.85:8085	4	Sensor al...	Start	Tuesday, August 9, 2011 9:18:31 AM
3	192.168.5.85:8085	5	Motion al...	Start	Thursday, March 27, 4098 11:59:59 ...
4	192.168.5.85:8085	10	Motion al...	Start	Thursday, March 27, 4098 11:59:59 ...
5	192.168.5.85:8085	11	Motion al...	Start	Thursday, March 27, 4098 11:59:59 ...
6	192.168.5.85:8085	4	Motion al...	Start	Thursday, March 27, 4098 11:59:59 ...
7	192.168.5.85:8085	16	Motion al...	Start	Thursday, March 27, 4098 11:59:59 ...
8	192.168.5.85:8085	11	Motion al...	Start	Monday, December 8, 4098 11:59:59...
9	192.168.5.85:8085	16	Motion al...	Start	Monday, December 8, 4098 11:59:59...
10	192.168.5.85:8085	4	Motion al...	Start	Monday, December 8, 4098 11:59:59...
11	192.168.5.85:8085	5	Motion al...	Start	Monday, December 8, 4098 11:59:59...
12	192.168.5.85:8085	10	Motion al...	Start	Monday, December 8, 4098 11:59:59...
13	192.168.5.85:8085	4	Motion al...	Start	Friday, August 21, 4099 11:59:59 PM...
14	192.168.5.85:8085	5	Motion al...	Start	Friday, August 21, 4099 11:59:59 PM...
15	192.168.5.85:8085	10	Motion al...	Start	Friday, August 21, 4099 11:59:59 PM...
16	192.168.5.85:8085	11	Motion al...	Start	Friday, August 21, 4099 11:59:59 PM...
17	192.168.5.85:8085	16	Motion al...	Start	Friday, August 21, 4099 11:59:59 PM...
18	192.168.5.85:8085	5	Motion al...	Start	Tuesday, May 4, 4100 11:59:59 PM C...
19	192.168.5.85:8085	11	Motion al...	Start	Tuesday, May 4, 4100 11:59:59 PM C...
20	192.168.5.85:8085	10	Motion al...	Start	Tuesday, May 4, 4100 11:59:59 PM C...

Clean

Alarm interface: Multi-Client Software get alarm info of device, IP address and ports of device, number of channel, alarm type, status and time/date

**Remote configuration interface**

**Control – Setting**

Remote Config

Device Info | Network Settings | Remote Control | Record Config | PTZ Settings

Hard Disk Status:  BG/80G

Remain Record Time: 2 Hours

Soft Version: T080804

Mac Address: FF-FF-FF-FF-FF-FF

Serial Number: 000800165C

SCM Version:

Save

**Device Info:**  
HDD status, firmware version, MAC address, serial number and MCU version code

Remote Config

Device Info | **Network Settings** | Remote Control | Record Config | PTZ Settings

Network Type: Static Config

IP: 192.168.5.84 Media Port: 8082

Mask: 255.255.255.0 Web Port: 8081

PPPoE Account: Password:

DNS: 202.96.134.133 Gateway: 192.168.5.1

DDNS

Host Name: ssvt.3322.org User: ssvt

Server IP: Password: \*\*\*\*\*

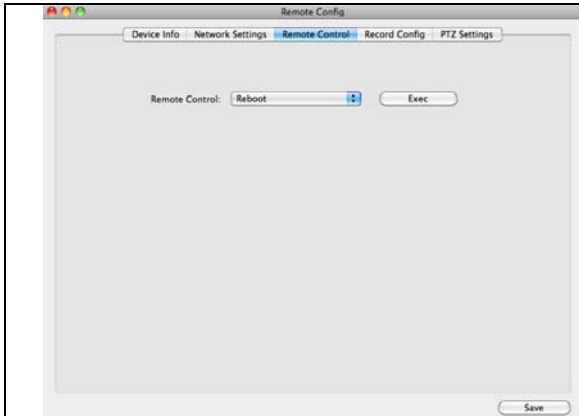
Mobile Settings

Wireless Network: 3G

Port: 8083

Save

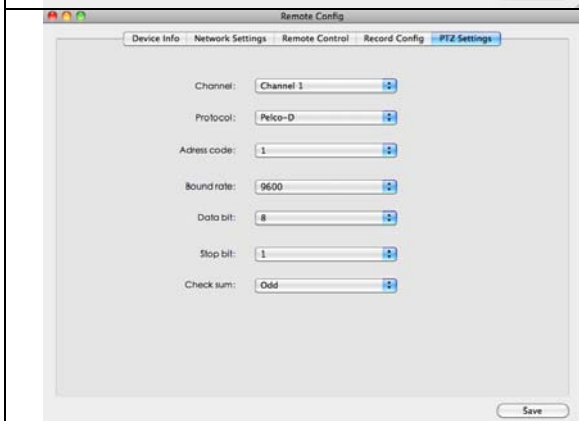
**Network Settings:**  
Network type (DHCP, PPPoE and Static Config) DDNS, Mobile Settings



**Remote control:**  
Reboot and format HDD



**Record Config:**  
Channel switch, record format, image quality, frame rate etc



**PTZ configuration:**  
Control protocol, address code, baud rate etc