

HCVR Video Recorder

Login from Internet Explorer

Contents

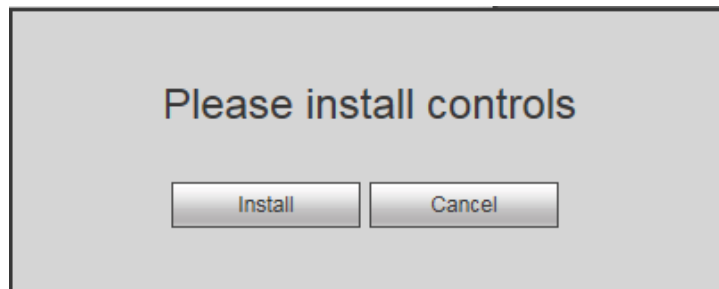
| | Page |
|--|-------------|
| <u>Login from Internet Explorer</u> | 1 |
| <u>Internet Explorer - Add Site to Trusted</u> | 2 |
| <u>Preview</u> | 3 |
| <u>Change Password</u> | 4 |
| <u>Add User Account</u> | 5 |
| <u>Add User Account - User Authority</u> | 6 |
| <u>Playback</u> | 7 |
| <u>Backup</u> | 8 |
| <u>Download by File or Time</u> | 9 |

Login from Internet Explorer

1. Open **Internet Explorer** and key in your login address <http://your.login.address:9000>
2. Key in your login **user name** & **Password**
3. Click on **Login**



4. Click on **Install** from the following for first time login



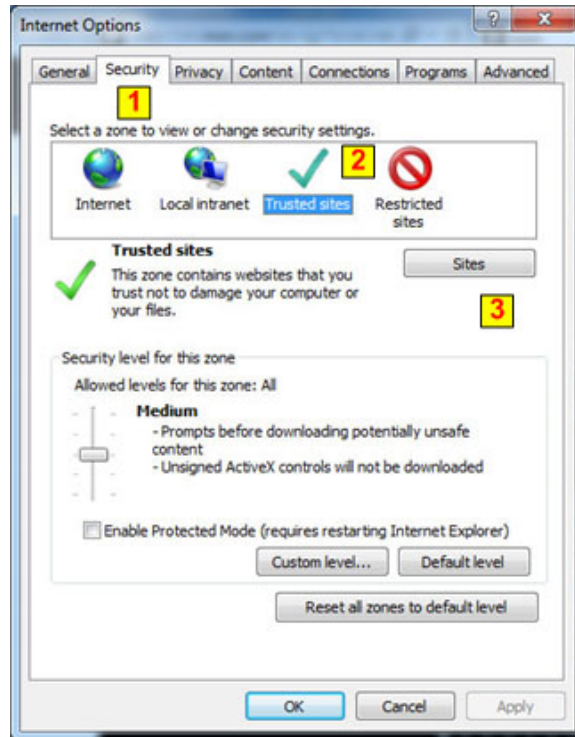
5. Click on **Run** from the following for first time login



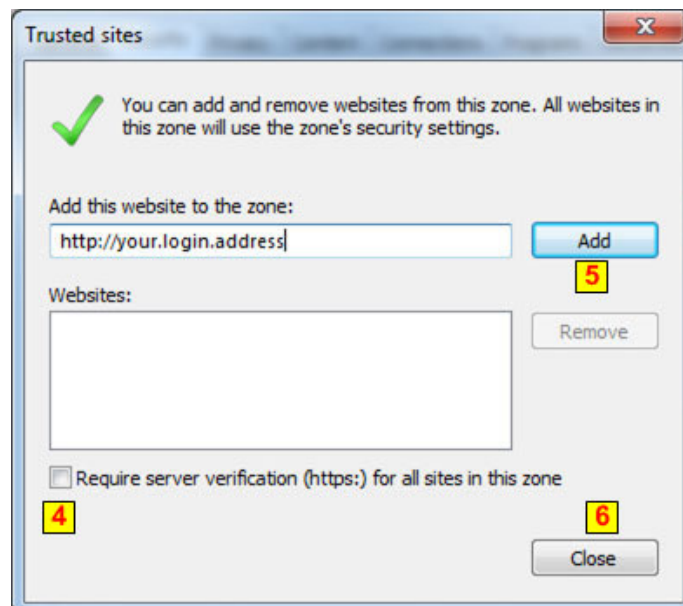
- ❖ Continuous three times login failure will result in system alarm and file times login failure will result in account lock
- ❖ Please rebook the device or wait for 30 minutes if your account has been locked

Internet Explorer - Add Site to Trusted

1. From IE - **Setting - Internet Options - Security**
2. Click **Trusted Sites**
3. Click on **Sites**

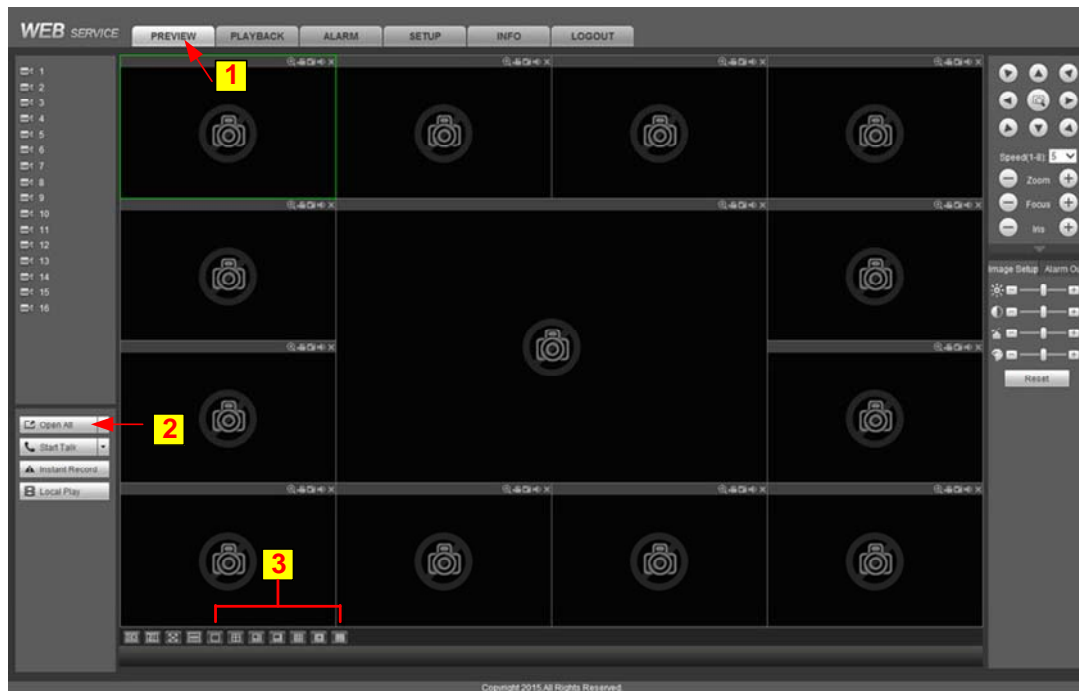


4. Remove the check for
Require server verification (https:) for all sites in this zone
5. Click on **Add**
6. Click on Close - **OK**
7. Close all IE and Open again



Preview

1. Click on **Preview**
2. Click on **Open All**
3. You can select 1, 4, 8, 16 view for the camera

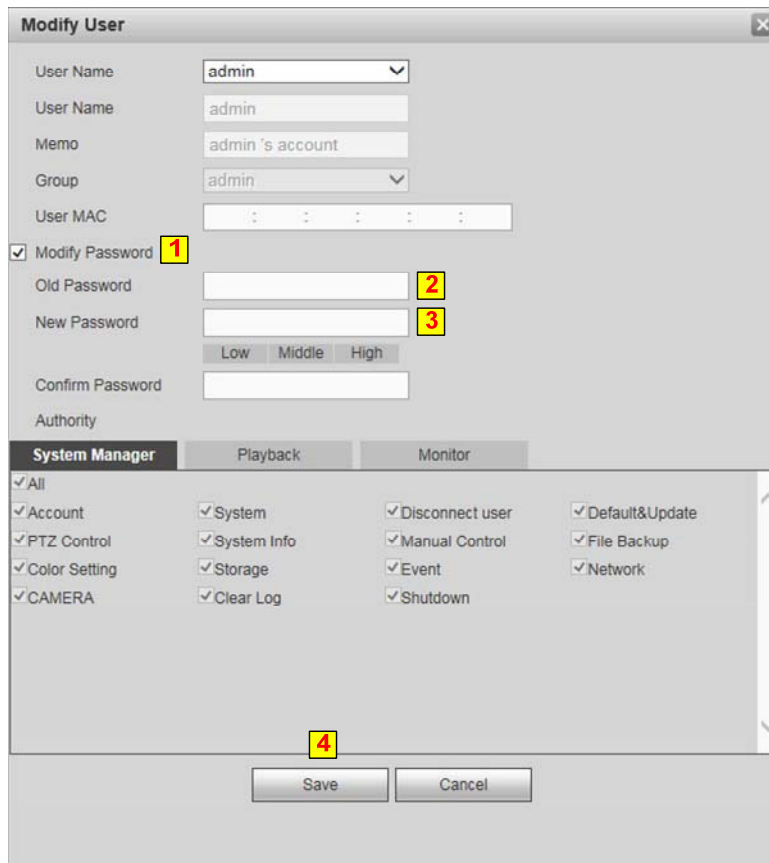


Change Password

- 1. Click Setup
- 2. Click Account
- 3. Click on Modify



- 1. Select Modify Password
- 2. Key in Old Password
- 3. Key in New Password



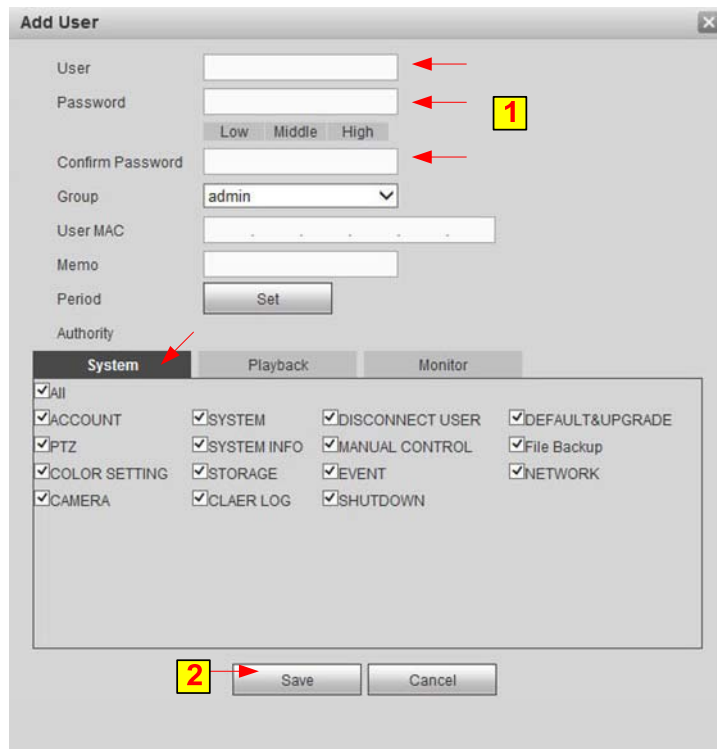
Add User Account

1. Click **Setup - System**
2. Click **Account**
3. Click on **Add User**



1. Key in **User Name, Password and Confirm Password**
2. Click **Save**

System - Select the authority for this user



Add User Account


Playback - Select the Channel can playback for this user

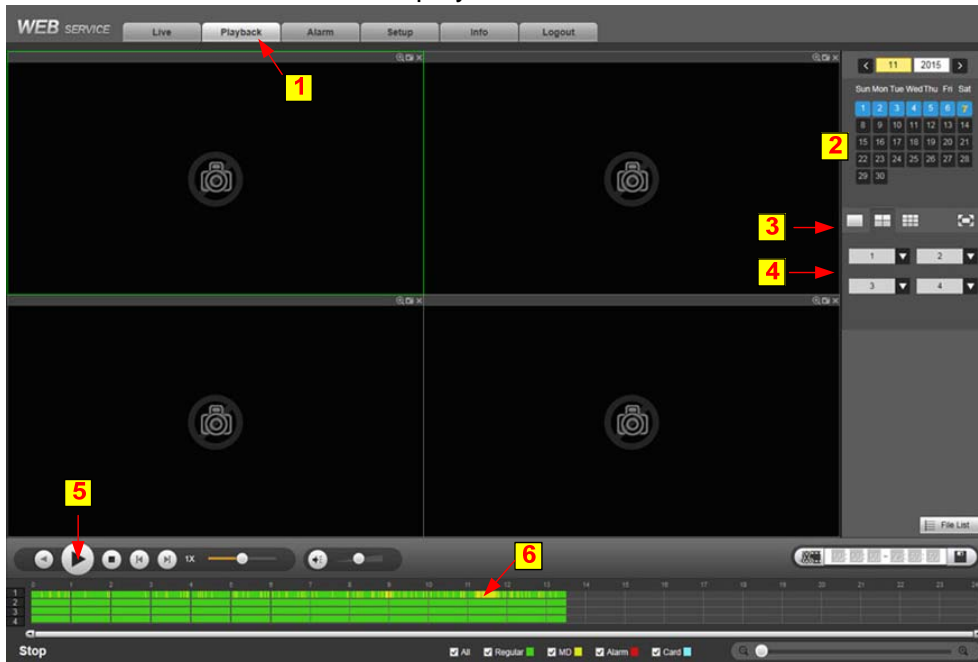
The screenshot shows the 'Add User' dialog box with the 'Playback' tab selected. The 'Authority' section has three tabs: 'System', 'Playback', and 'Monitor'. The 'Playback' tab is active, and a red arrow points to it. Below the tabs is a grid of checkboxes for channels 1 through 16, all of which are checked. The 'All' checkbox is also checked. At the bottom are 'Save' and 'Cancel' buttons.

Monitor - Select the Channel can Monitor for this user

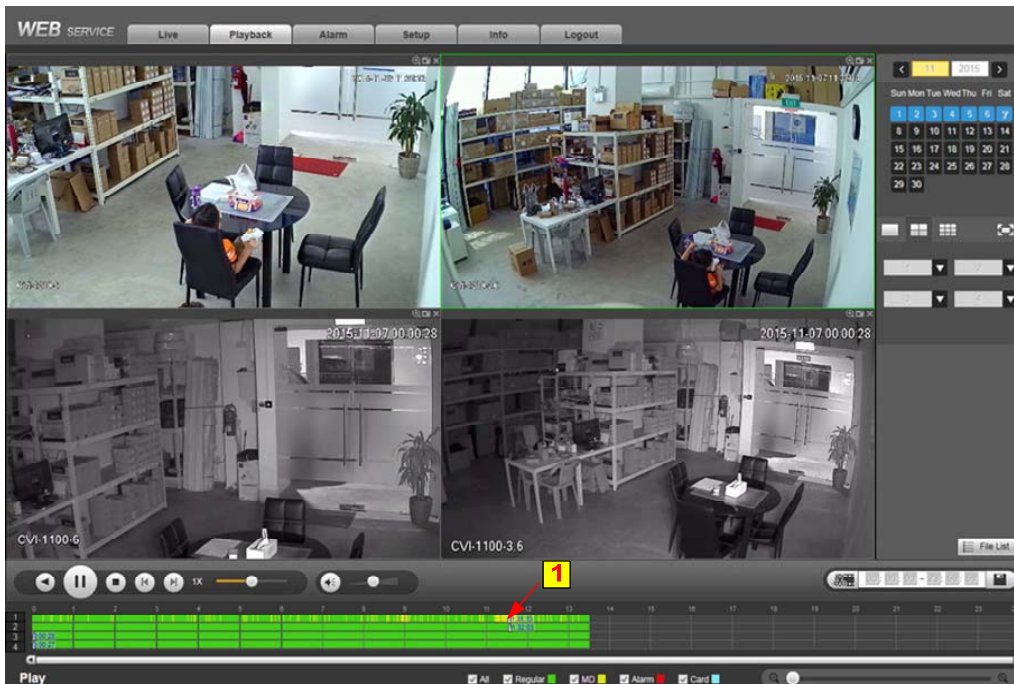
The screenshot shows the 'Add User' dialog box with the 'Monitor' tab selected. The 'Authority' section has three tabs: 'System', 'Playback', and 'Monitor'. The 'Monitor' tab is active, and a red arrow points to it. Below the tabs is a grid of checkboxes for channels 1 through 16, all of which are checked. The 'All' checkbox is also checked. At the bottom are 'Save' and 'Cancel' buttons.

Playback



1. Click on **Playback**
2. Select the **Date** you need to playback
3. Select view type (Number of camera you need to playback)
4. Select the Channel you need to playback
5. Click on **Play** 
6. Yellow color with motion click on the time for playback

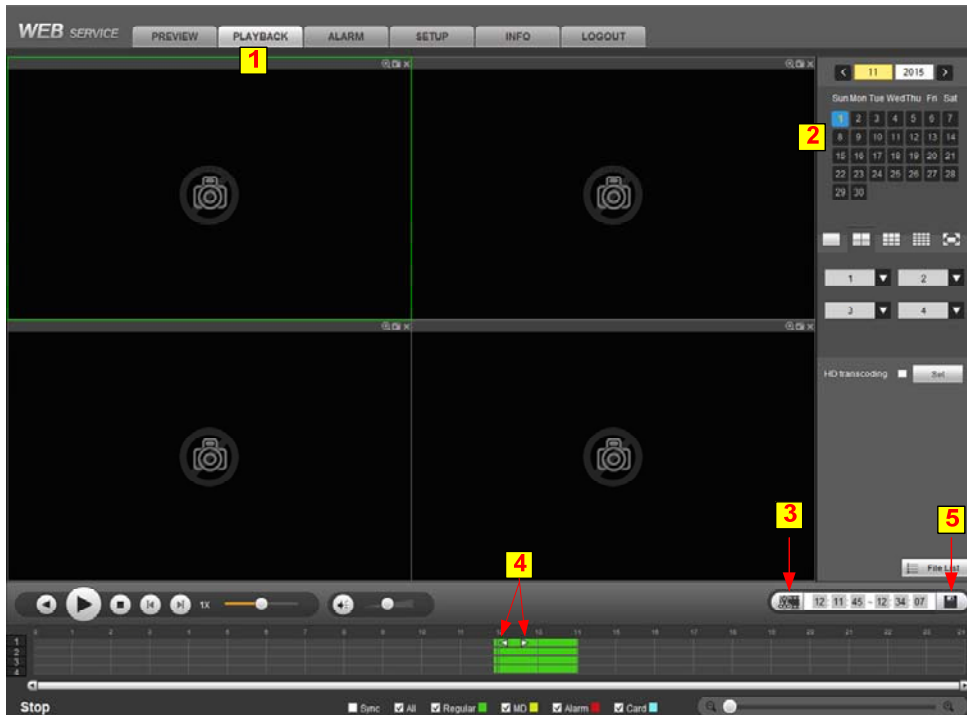


1. Click on the **Time** you want to playback



Backup

1. Click on **Playback**
2. Select **Date**
3. Click on **Cut** 
4. Select the camera and time you need to backup
5. Click on **Save** 



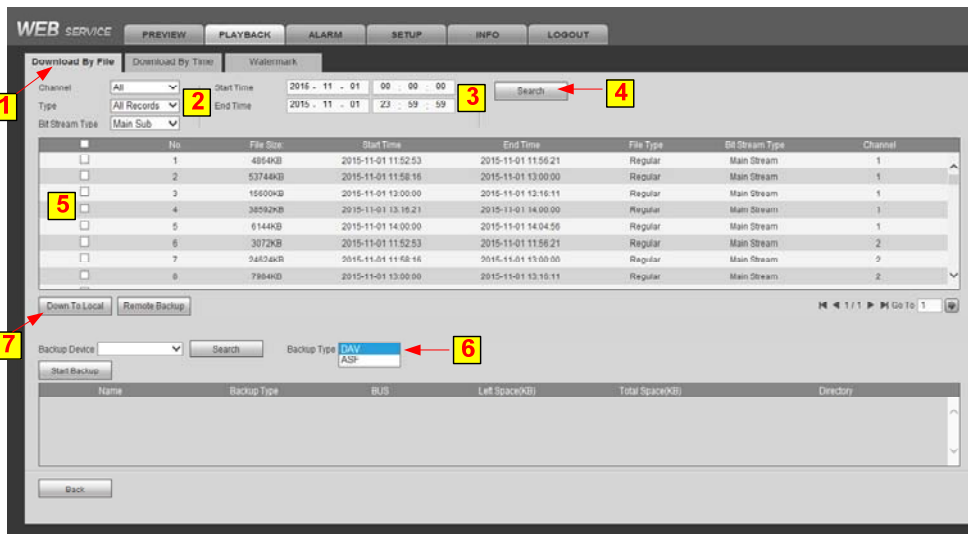
Download by File or by Time

1. Click **More**



Download by File

1. Click on **Download By File**
2. Select the Channel, Record Type and Bit Stream Type
3. Select the **Date** and **Time** you want to download
4. Click on **Search**
5. Select the File you need to download
6. Select the Backup Type
7. Click on **Down To Local**



Download by Time

1. Click on **Download By Time**
2. Select the Channel, Bit Stream Type
3. Select the **Date** and **Time** you want to download
4. Click on **Down To Local**
5. Select the Record Format
6. Click on **OK**

