

User Manual for ViewCam for Windows

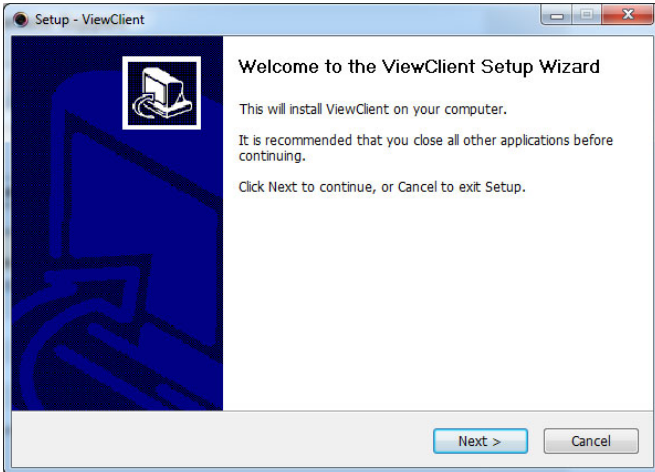
Contents

	Page
Install View Client for Windows	1
Install View Client for Wondows	2
Add Group	3
Add Device	4
Live View	5
Add Channel Group	6
Playback	7
Playback	8
Backup	9

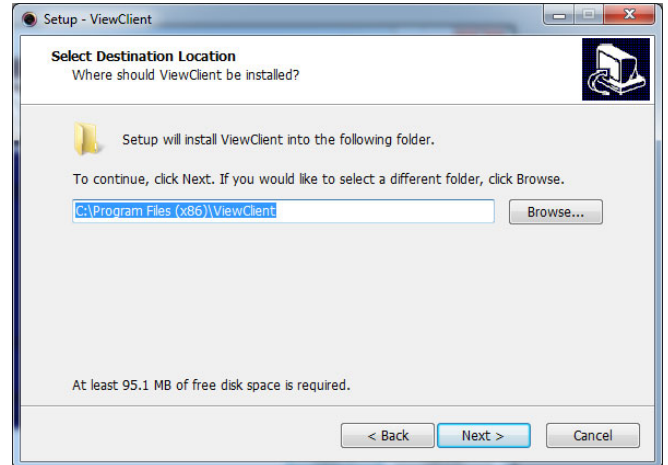
Install View Client for Windows

View Client Software can download from www.iti.com.sg - Support

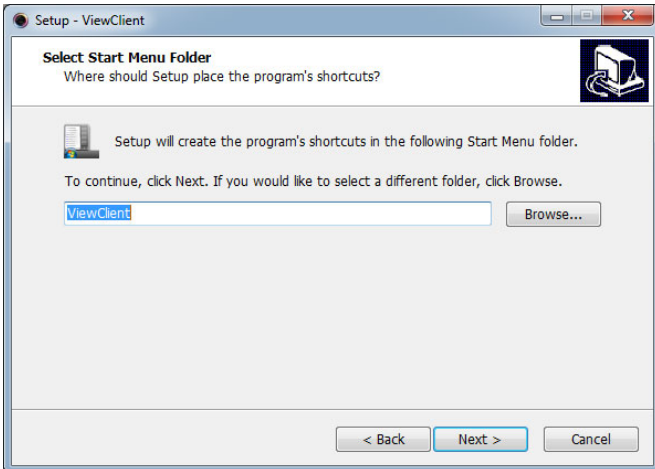
1. Run View Client and click on Next



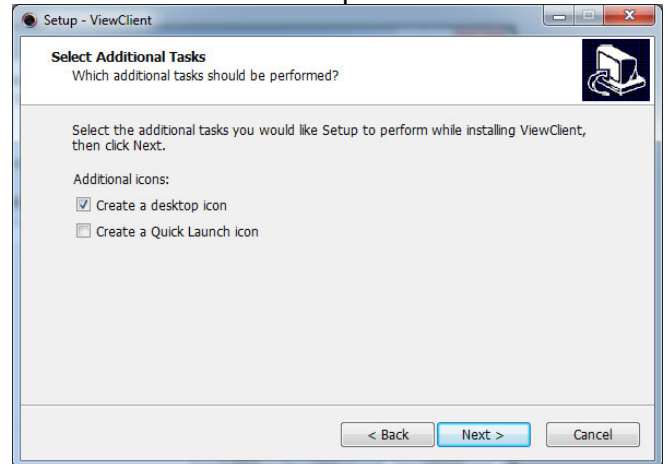
2. Click on Next



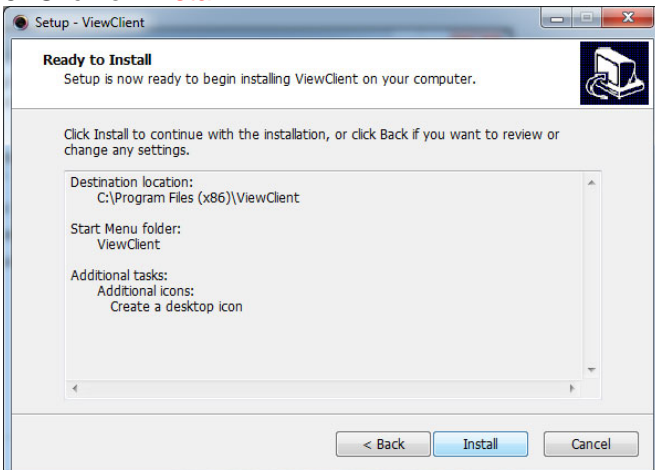
3. Click on Next



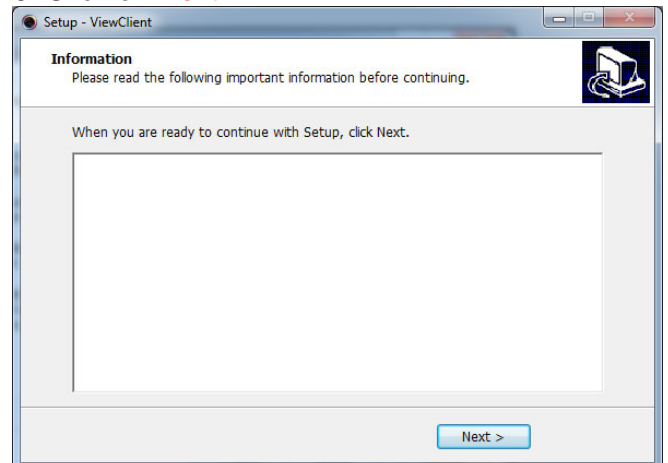
4. Select Create a desktop icon and click on Next



5. Click on Install

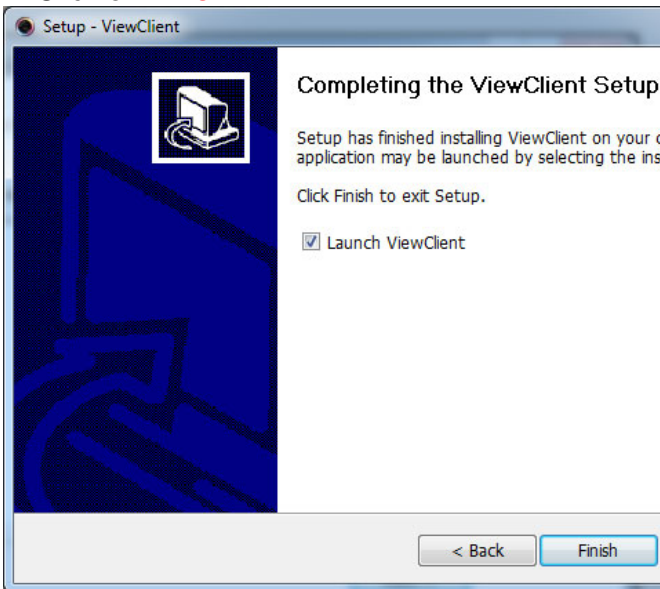


6. Click on Next

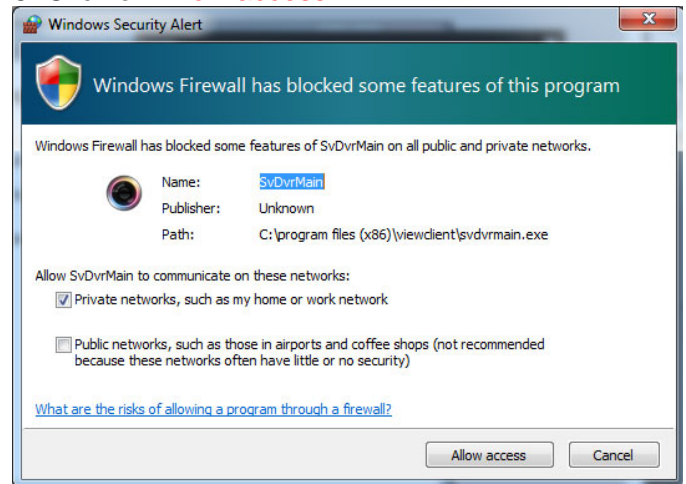


Install View Client for Windows

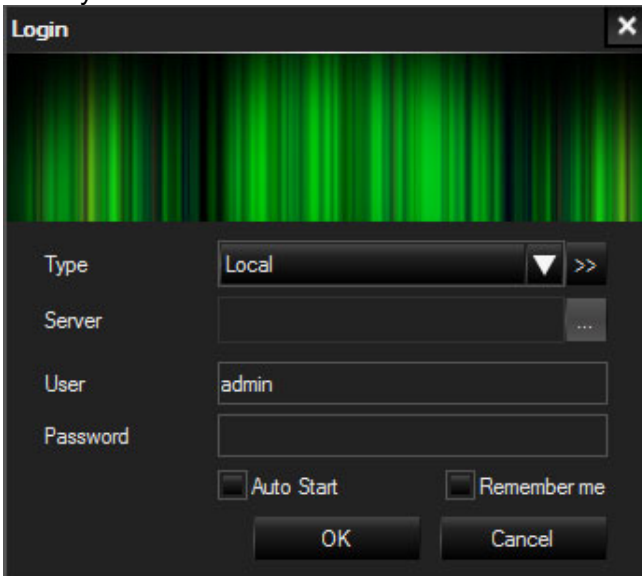
7. Click on **Finish**



8. Click on **Allow access**

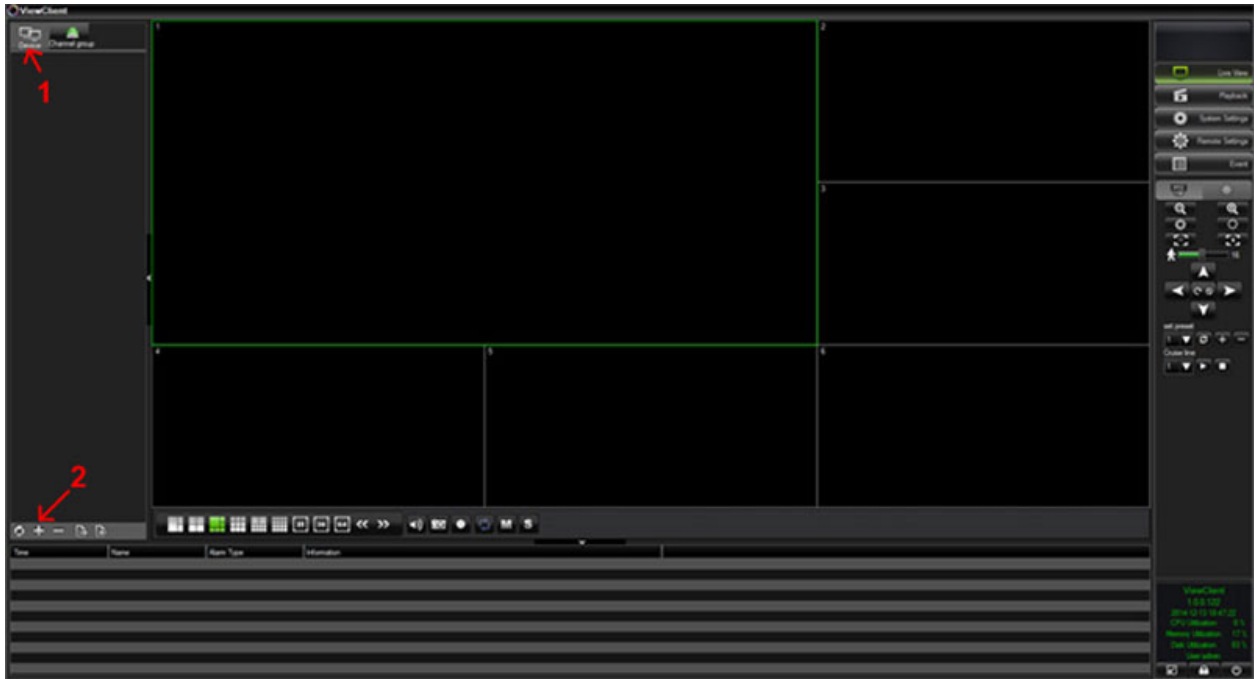


9. Key in **admin** from the User and click on **OK**

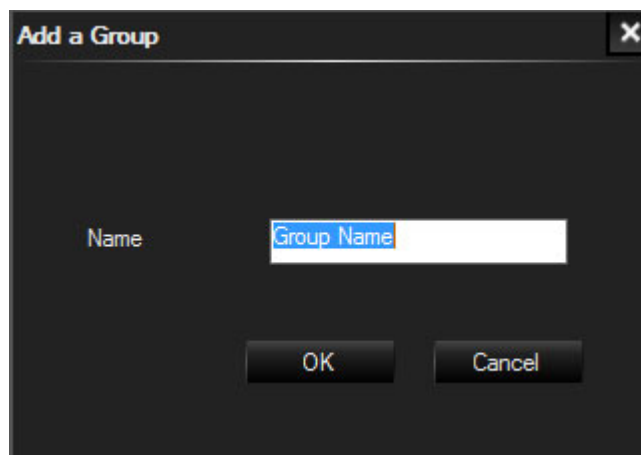


Add Group

1. Click on **Device**
2. Click on **+**

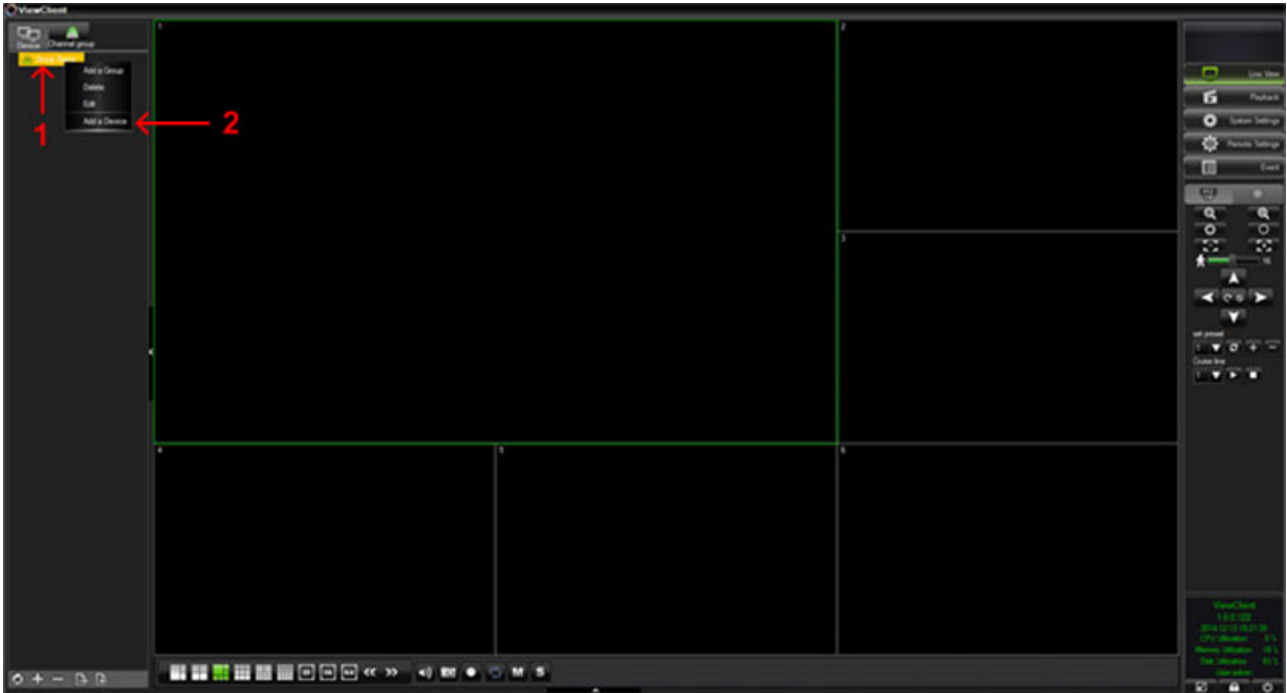


3. Key in the **Group Name**



Add Device

1. Click on the **Group** and Right Click from the Sub Manual select **Add Device**



Add a Device

Device type	DVR/NVR
Group	Group Name
Name	
IP	
Port	0
Web Port	
Channel Count	4
Transmit Server IP Address	
User	
Password	
Stream setup	Sub Stream

Ip Search OK Cancel

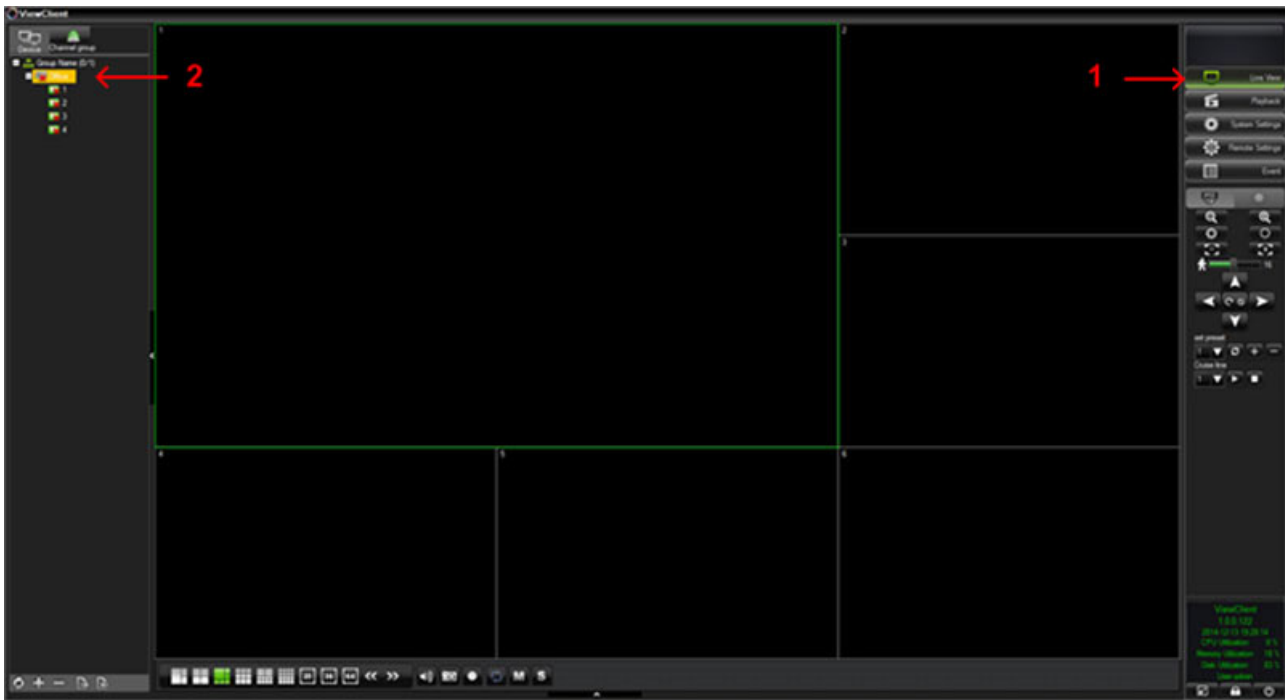
Key In the following

- Name:
- IP:
- Port:
- Web Port:
- Channel Count:
- User Name:
- Password:
- Stream Setup: **Sub Stream**

Click on **OK**

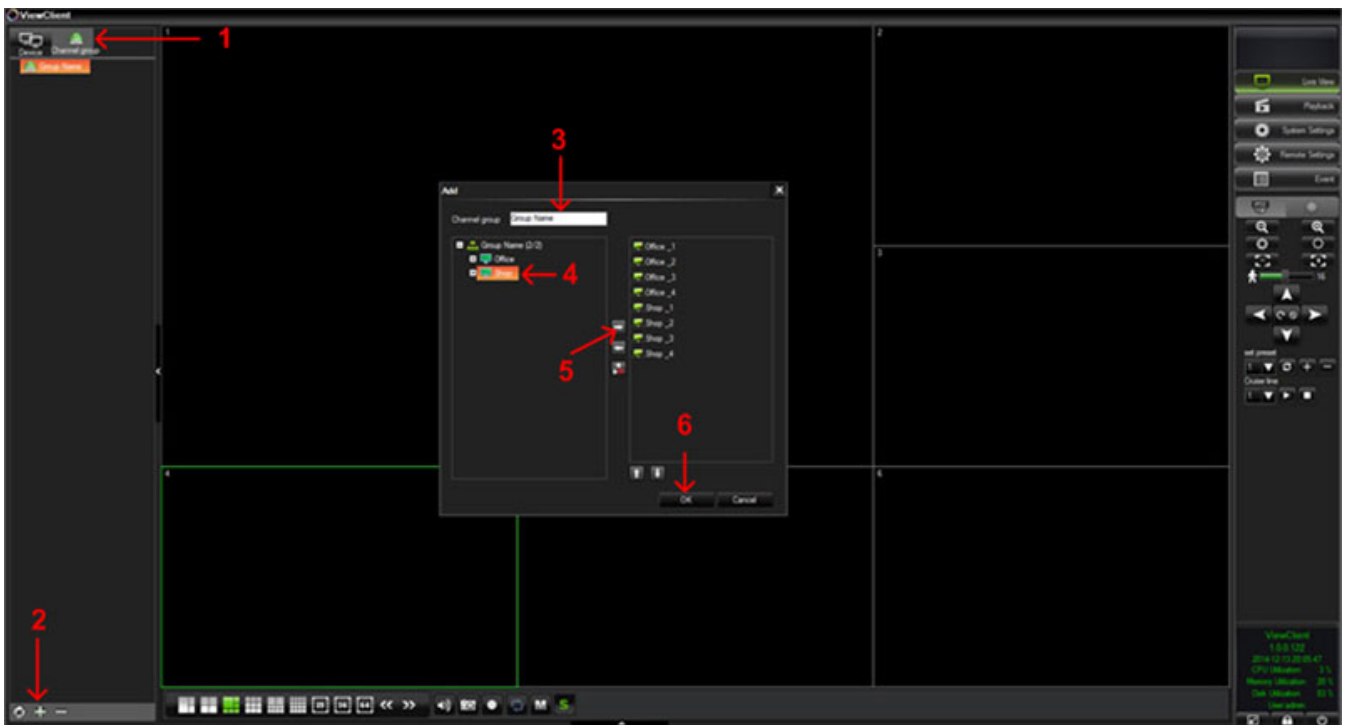
Live View

1. Click on **Live View**
2. Click on the **Device** for Live view

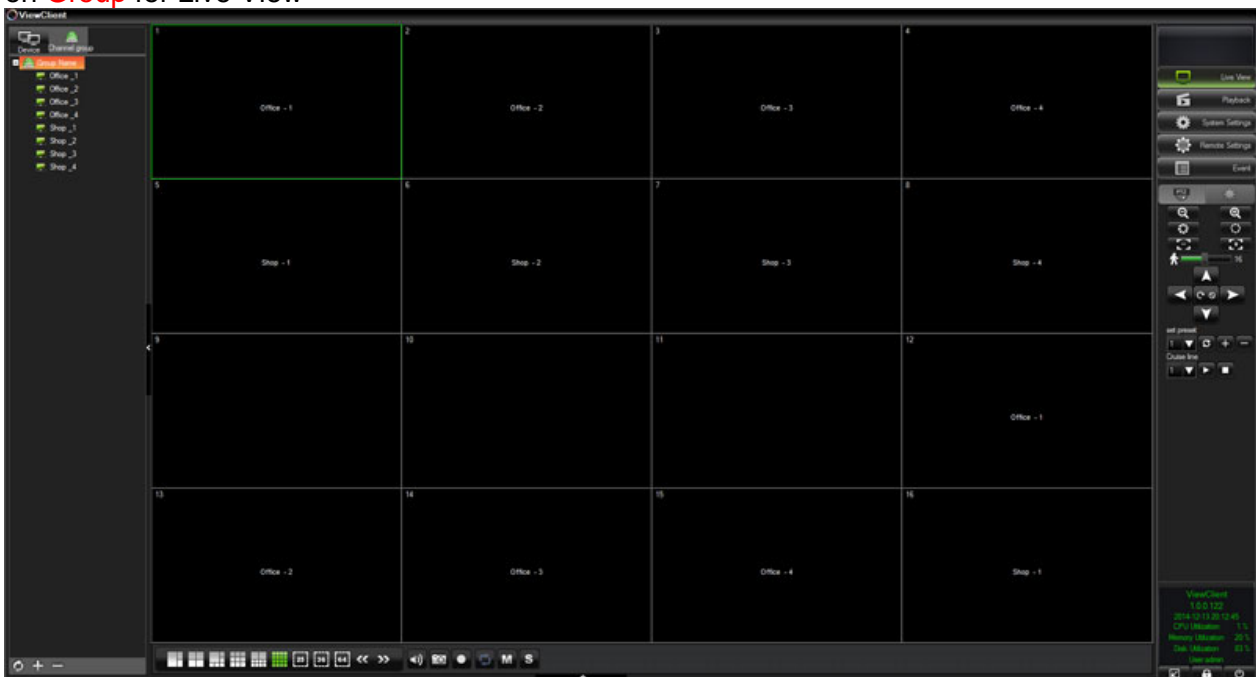


Add Channel Group

1. Click on **Channel Group**
2. Click on **+**
3. Key in Group Name
4. Select the **Device** add in the Group to view
5. Click on **➔** to add the device to Group
6. Finish add device Click on **OK**

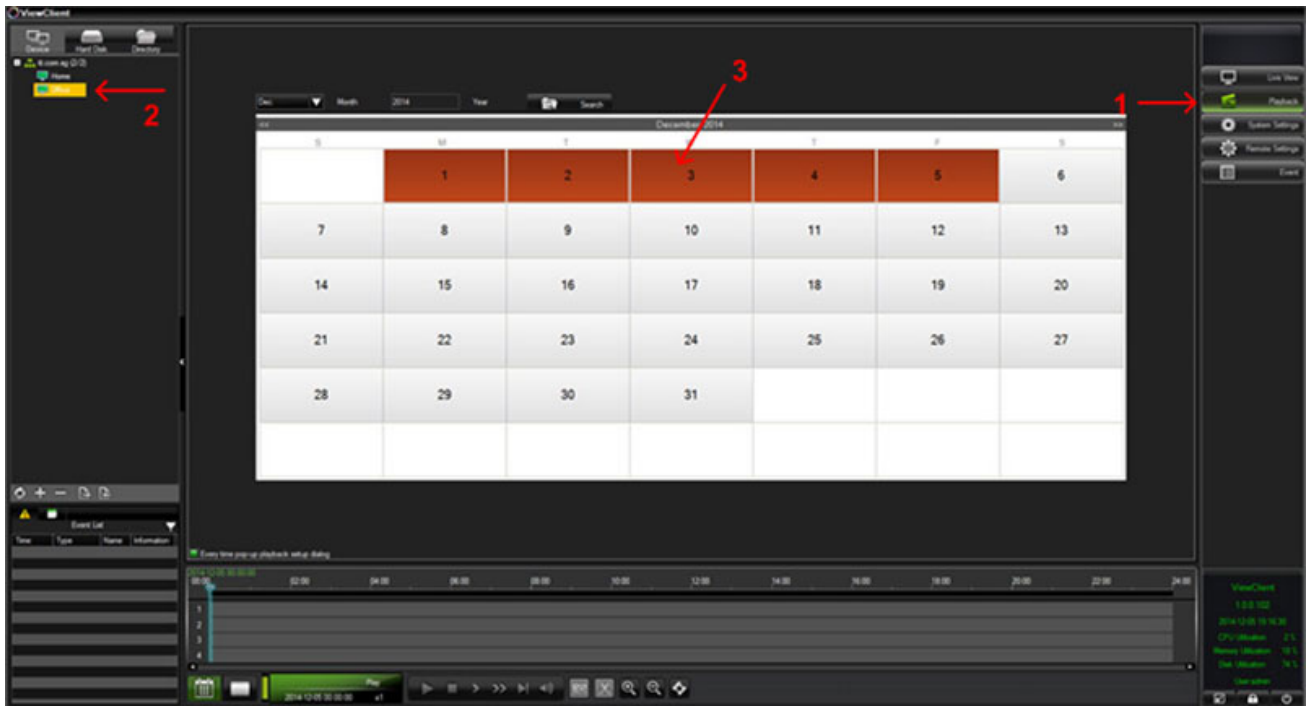


Click on **Group** for Live View

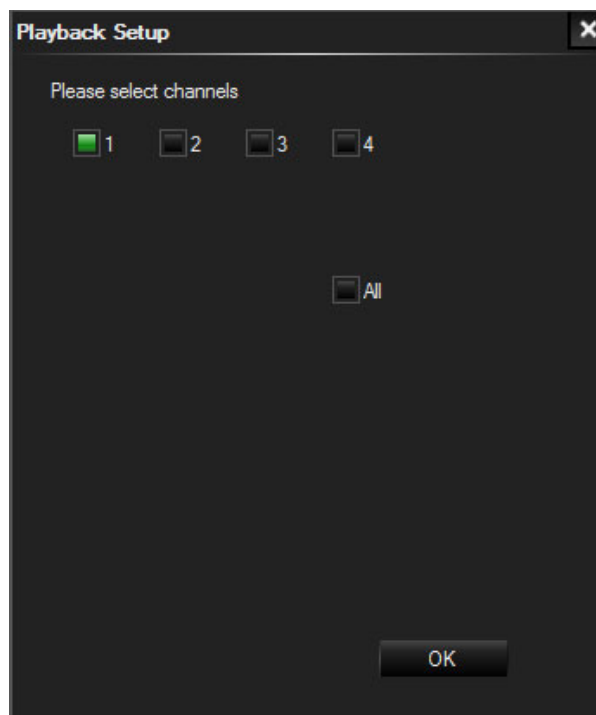


Playback

1. Click on **Playback**
2. Click on the **Device** for Playback
3. Click on the **Date** for Playback

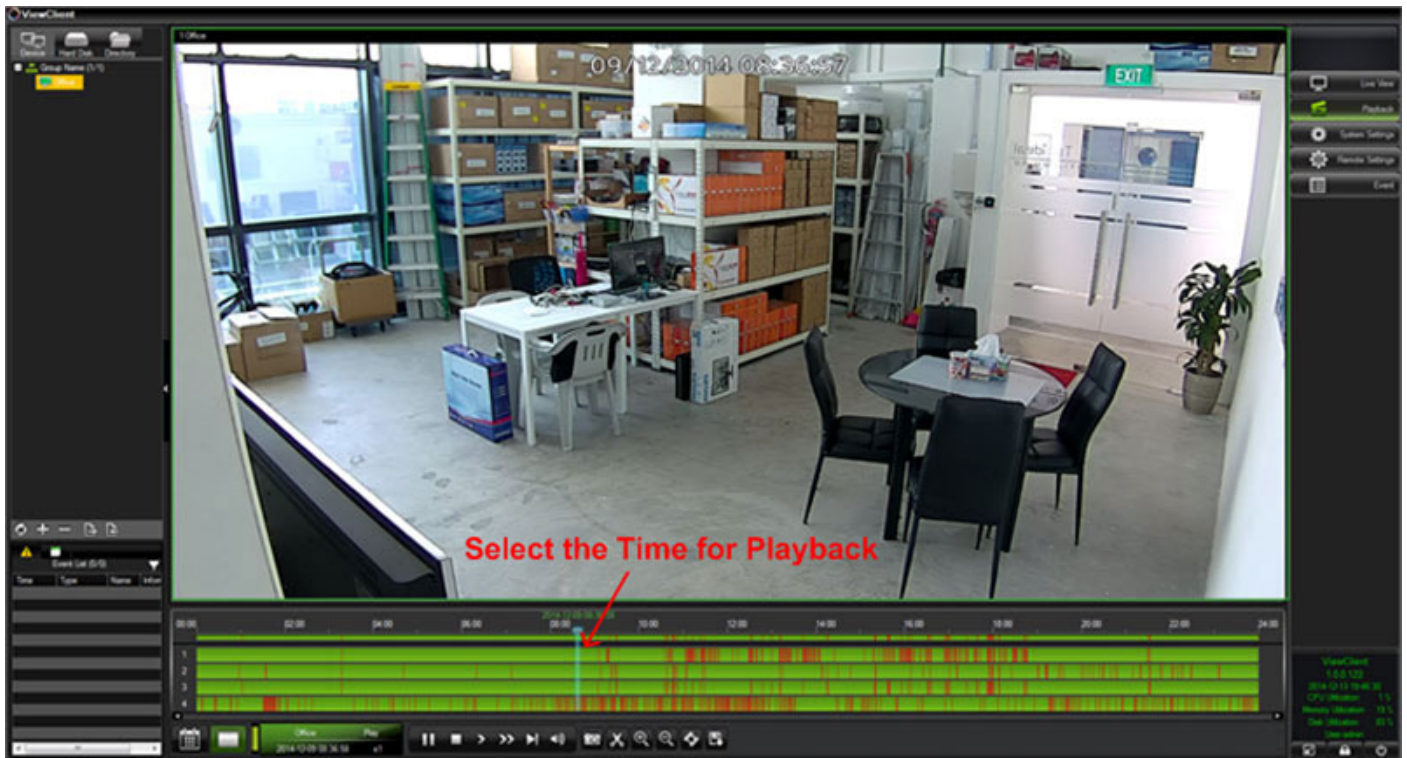


Select the **Channels** (Camera) for playback




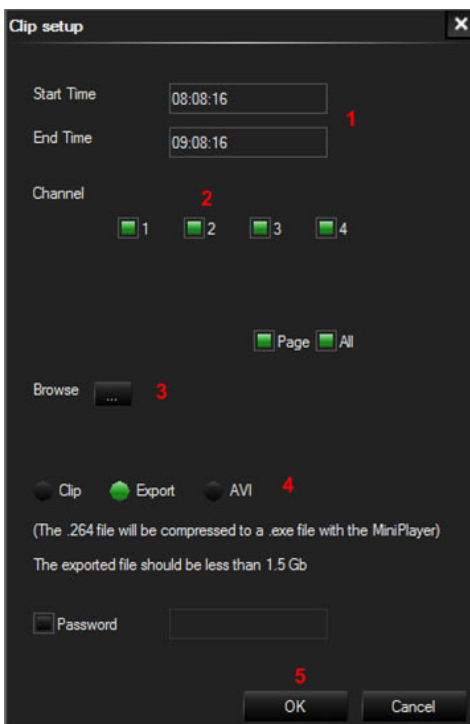
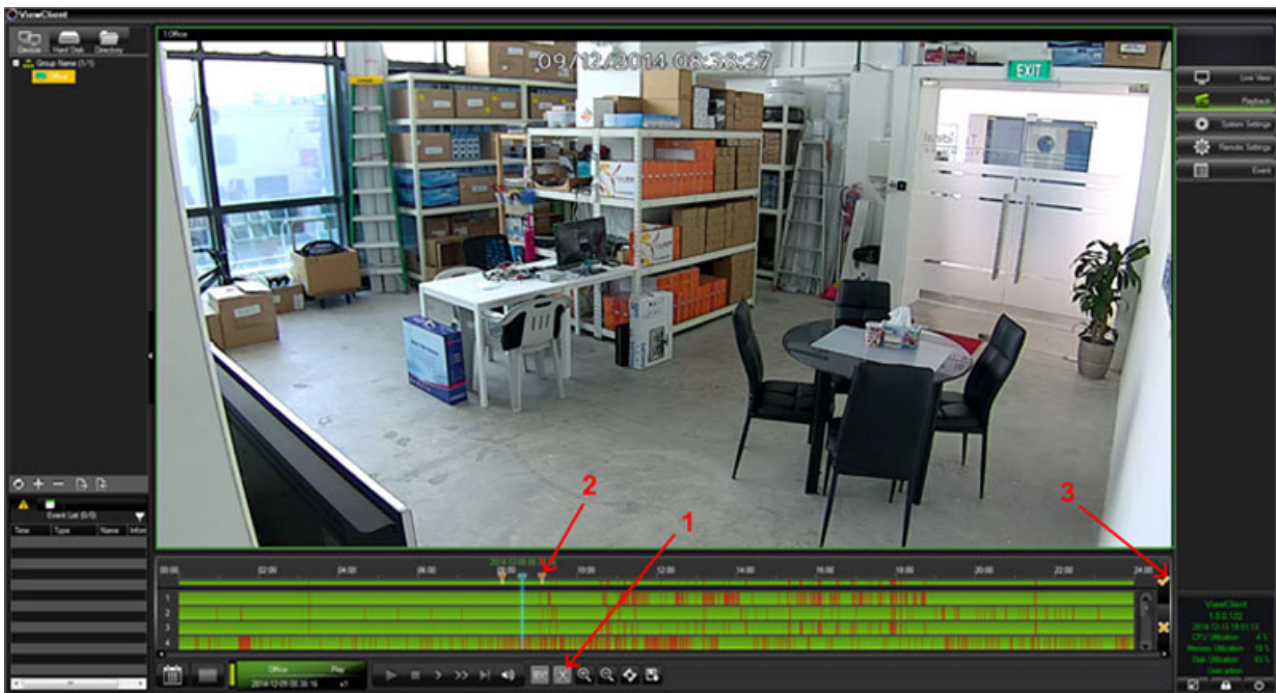
Playback

Click on the **Time** for Playback



Backup

1. Click on 
2. Select the Time for backup 
3. Click on 



1. Select **Start Time** and **End Time**
2. Select **Channel**
3. **Browse** the location to keep the backup file
4. Select the Video format
5. Click on **OK**